

The Debeque

Bedrooms: 4-5 | Bathrooms: 3-4 | Finished: 2,938 | Total: 3,526



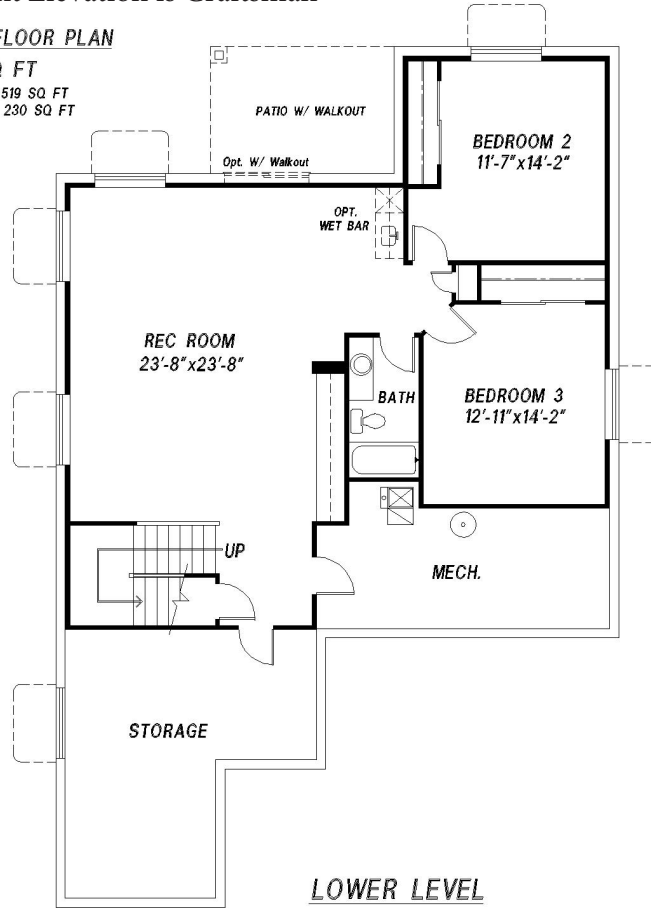
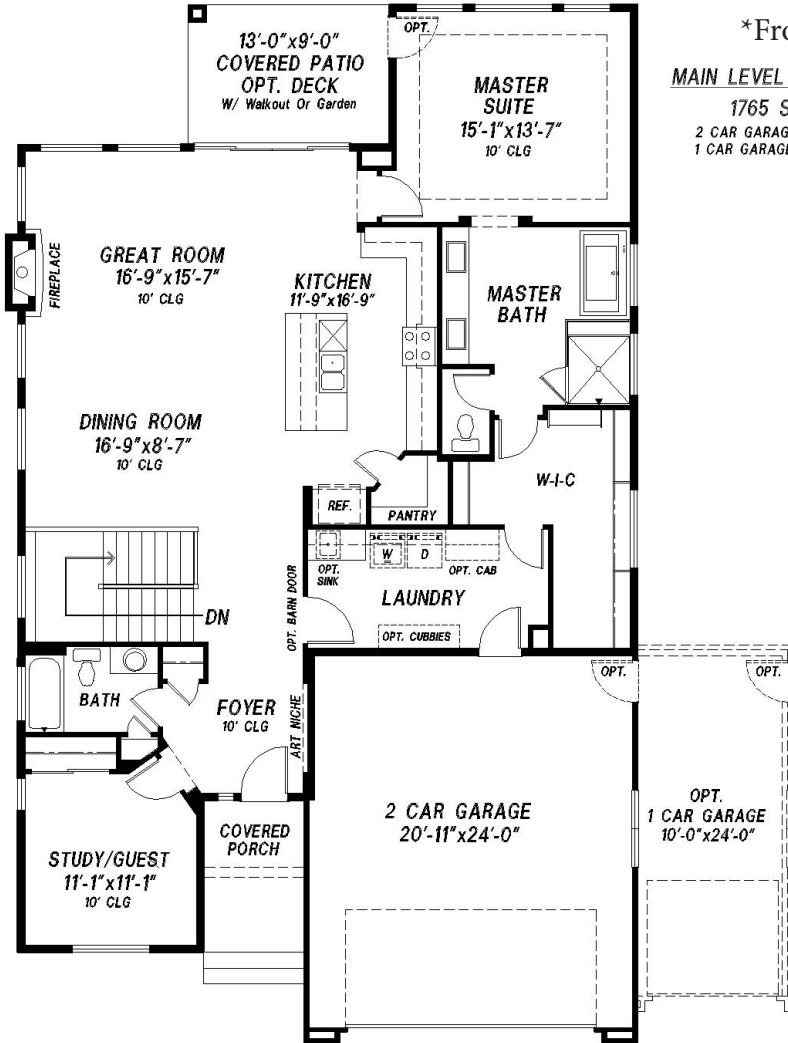
We Build The Home You See When You Close Your Eyes And Dream

*Front Elevation is Craftsman

MAIN LEVEL FLOOR PLAN

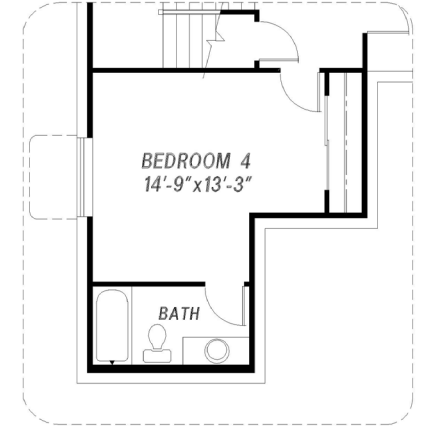
1765 SQ FT

2 CAR GARAGE 519 SQ FT
1 CAR GARAGE 230 SQ FT



LOWER LEVEL

1761 SQ FT TOTAL
1173 SQ FT FINISHED



OPT. BEDROOM 4
270 SQ FT

European Cottage



French Country



Tuscan



Policy of Continued Product Improvement

Saddletree Homes Reserves the Right to Make Changes Without Notice. Some Windows Shown are optional. All Room Sizes Approximate. Floor Plans Change Per Elevation. Saddletree Floor Plans are Copyrighted to Fullest Extent of the Law. (Updated Master 06/26/2018)

