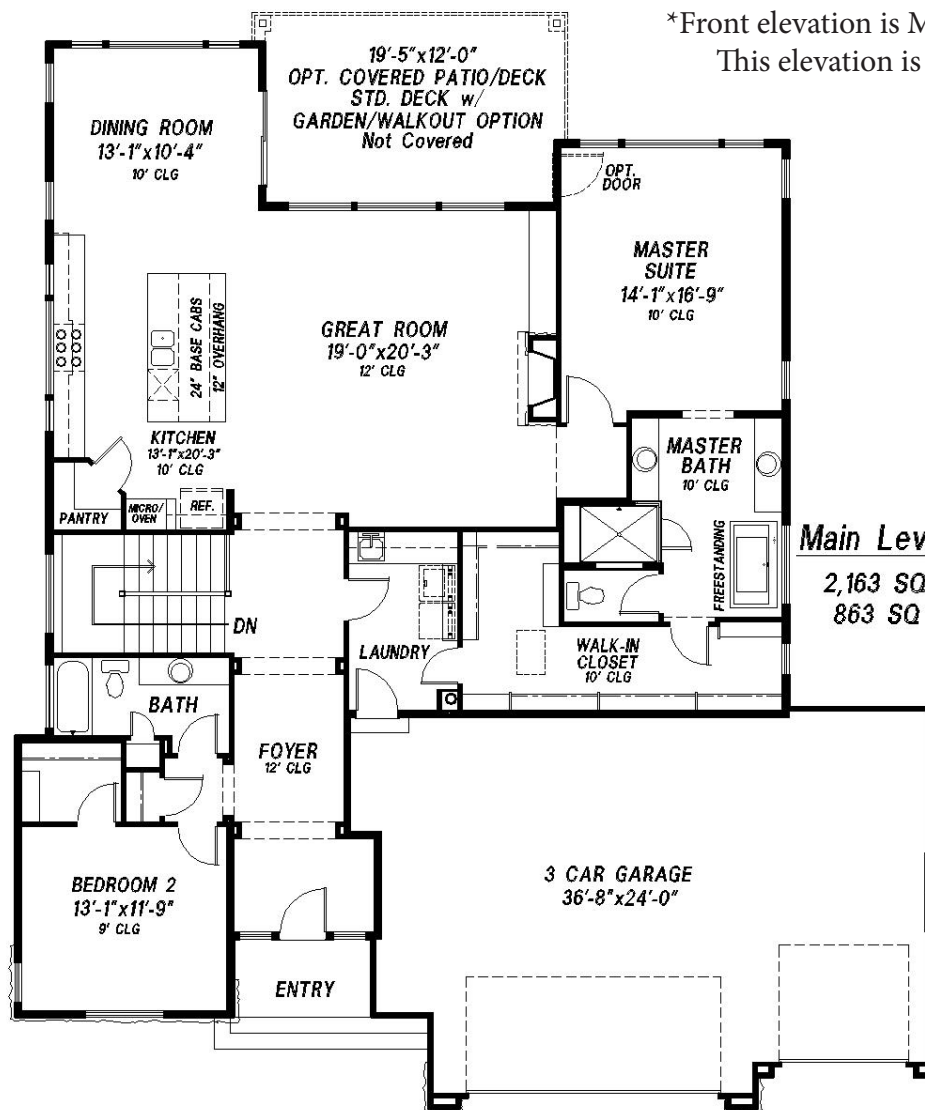


The Dillion

Bedrooms: 4-5 | Bathrooms: 4-5 | Finished: 3,711 | Total: 4,310

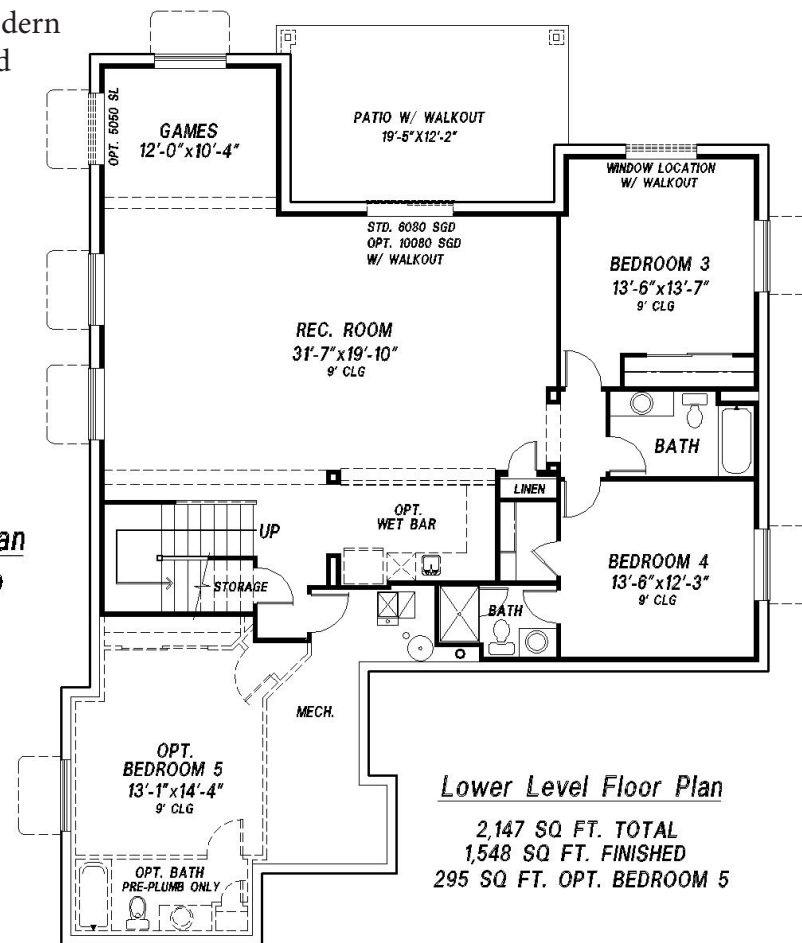


We Build The Home You See When You Close Your Eyes And Dream!



Main Level Floor Plan

2,163 SQ. FT. FINISHED
863 SQ. FT. GARAGE



Lower Level Floor Plan

2,147 SQ. FT. TOTAL
1,548 SQ. FT. FINISHED
295 SQ. FT. OPT. BEDROOM 5

PRAIRIE



FARMHOUSE



FRENCH COUNTRY



MODERN



RUSTIC

Policy of Continued Product Improvement

Saddletree Homes Reserves the Right to Make Changes Without Notice. Some Windows Shown are optional. All Room Sizes Approximate.

Floor Plans Change Per Elevation. Saddletree Floor Plans are Copyrighted to Fullest Extent of the Law. (Updated Master 11/01/2018)

