

The Glenwood

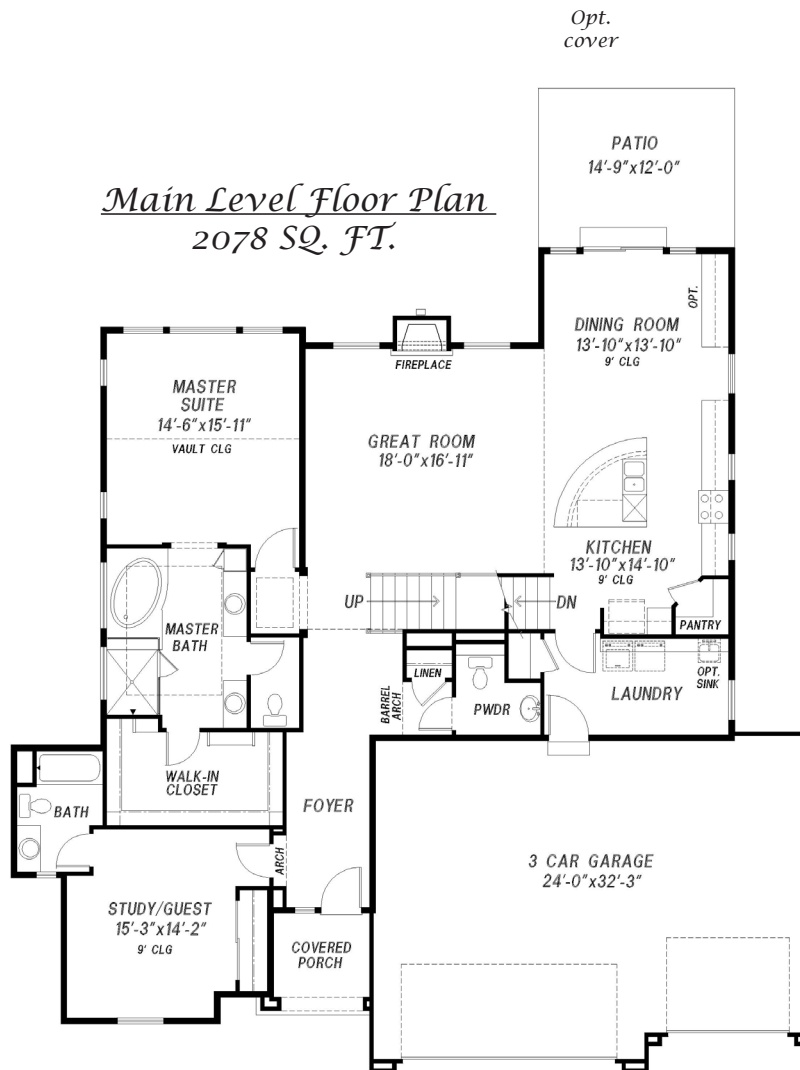
Bedrooms: 4-7 | Bathrooms: 4-6 | Finished: 2,829 | Total: 4,910



We Build The Home You See When You Close Your Eyes And Dream

*Front Elevation is French Country

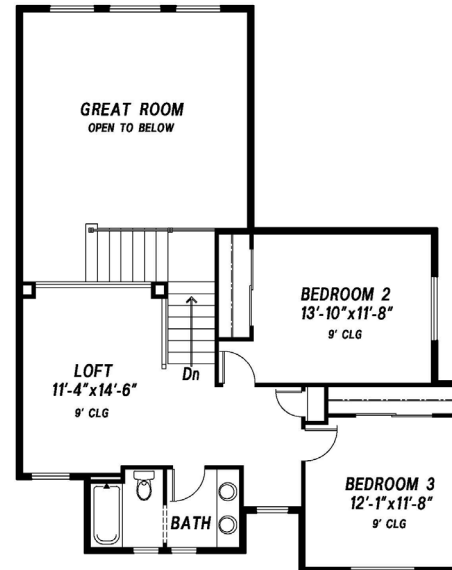
Main Level Floor Plan 2078 SQ. FT.



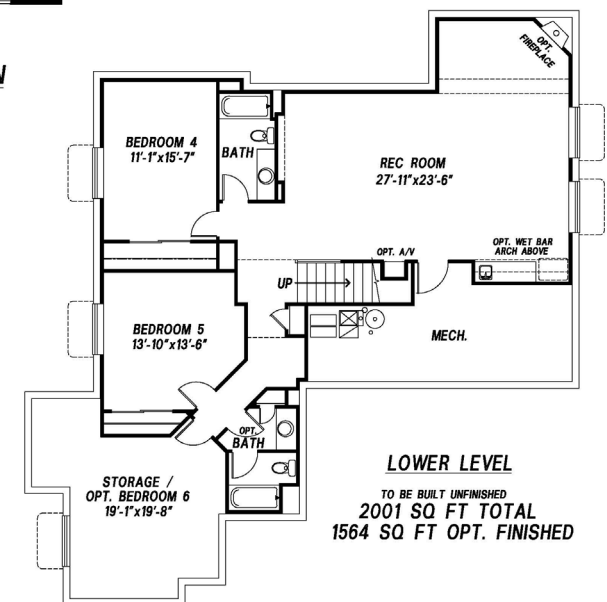
Craftsman



French Coutry



UPPER LEVEL FLOOR PLAN
751 SQ FT



LOWER LEVEL
TO BE BUILT UNFINISHED
2001 SQ FT TOTAL
1564 SQ FT OPT. FINISHED

Policy of Continued Product Improvement

Saddletree Homes Reserves the Right to Make Changes Without Notice. Some Windows Shown are optional. All Room Sizes Approximate. Floor Plans Change Per Elevation. Saddletree Floor Plans are Copyrighted to Fullest Extent of the Law. (Updated 03/20/2017)

