

The Summit

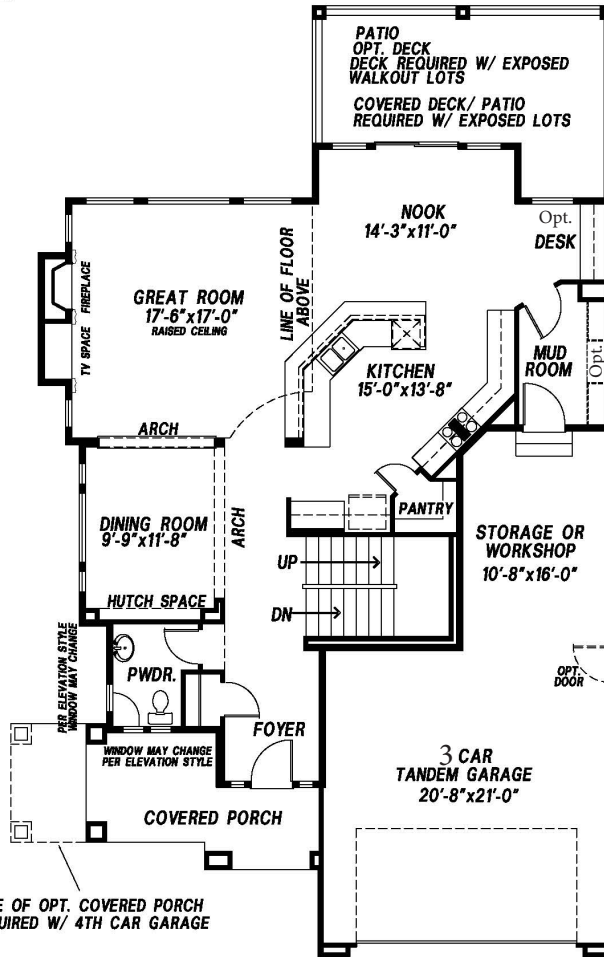
Bedrooms: 3-5 | Bathrooms: 3-4 | Finished: 2,849 | Total: 4,184



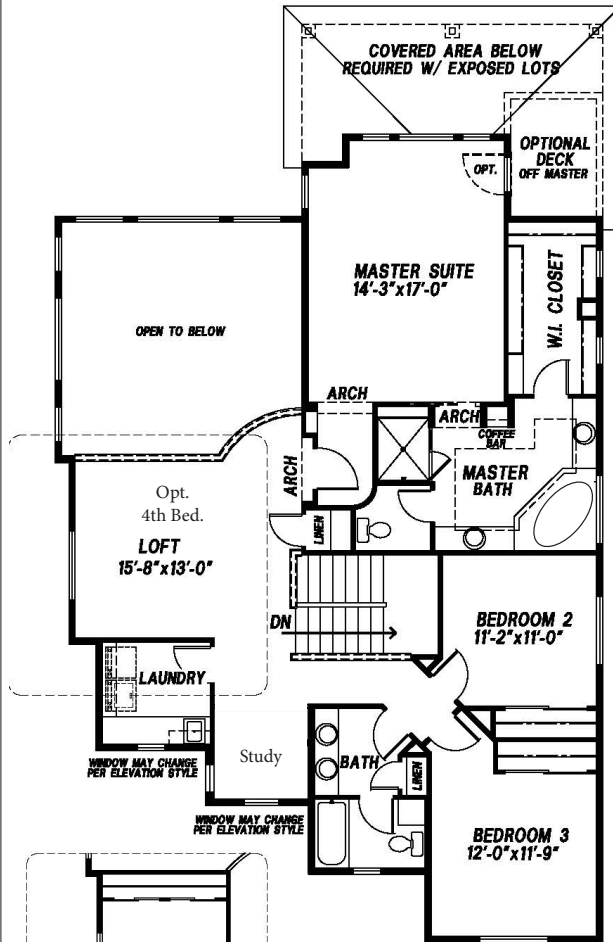
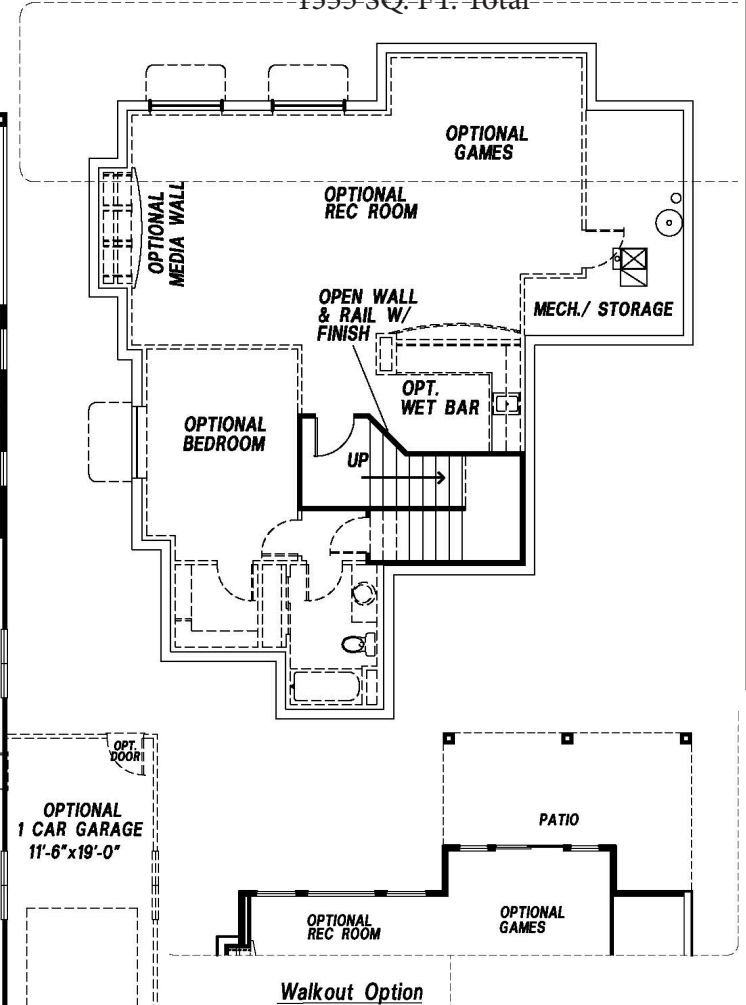
We Build The Home You See When You Close Your Eyes And Dream

*Front Elevation is French Country

Main Level Floor Plan 1335 SQ. FT.



Lower Level Floor Plan To Be Built UNFINISHED Opt. Finished Living Area 1095 SQ.FT. 1335 SQ.-FT. Total



Upper Level Floor Plan 1514 SQ. FT.



Craftsman



Prairie



Spanish

Policy of Continued Product Improvement

Saddletree Homes Reserves the Right to Make Changes Without Notice. Some Windows Shown are Optional. All Room Sizes Approximate. Floor Plans Change Per Elevation. Saddletree Floor Plans are Copyrighted to Fullest Extent of the Law. (Updated 04/20/2018)

