

The Arvada

Bedrooms: 4-5 | Bathrooms: 4-5 | Finished: 3,292 | Total: 3,996



*Saddletree
Homes*

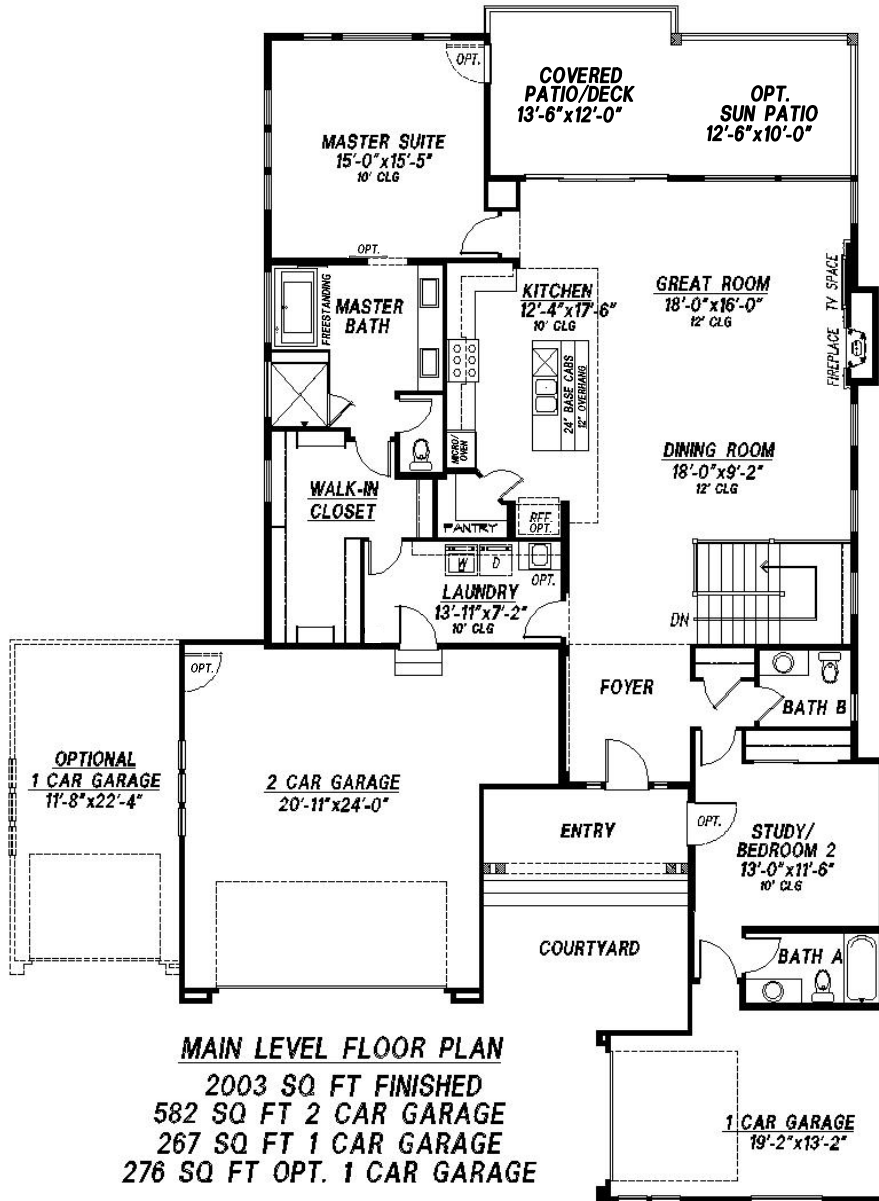
We Build The Home You See When You Close Your Eyes And Dream!

Arvada

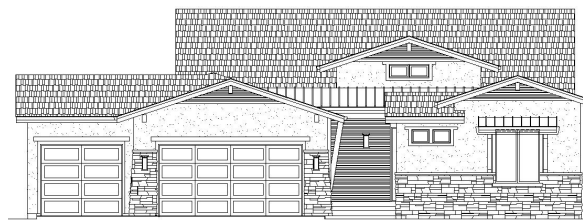
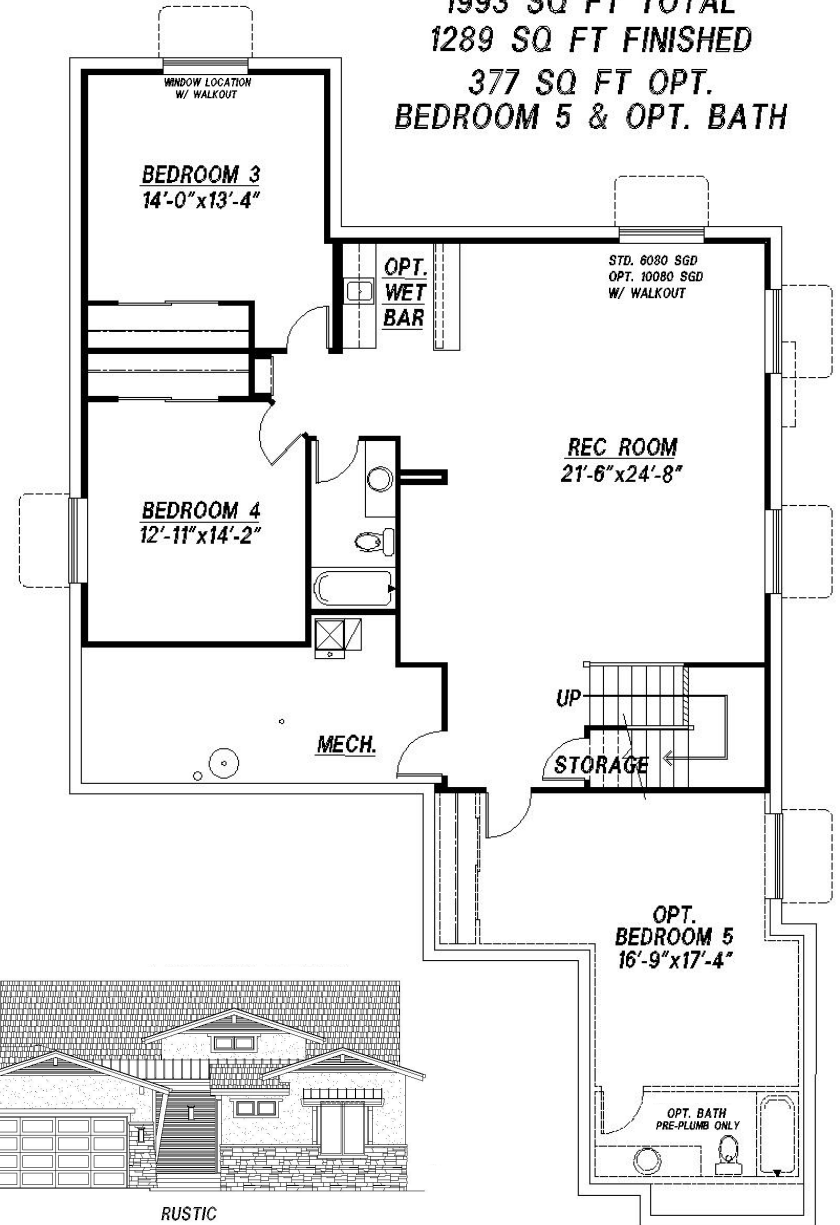
*Front Elevation is Rustic

9'
LOWER LEVEL

1993 SQ FT TOTAL
1289 SQ FT FINISHED
377 SQ FT OPT.
BEDROOM 5 & OPT. BATH



MAIN LEVEL FLOOR PLAN
2003 SQ FT FINISHED
582 SQ FT 2 CAR GARAGE
267 SQ FT 1 CAR GARAGE
276 SQ FT OPT. 1 CAR GARAGE



RUSTIC

Policy of Continued Product Improvement

Saddletree Homes reserves the right to make changes without notice. Some windows shown are optional. All room sizes are approximate. Floor plans change per elevation. Photographs may include non-standard items. Basement window locations may change based on lot topography. Saddletree floor plans are copyrighted to the fullest extent of the law. (Updated Master 09.22.2021)

